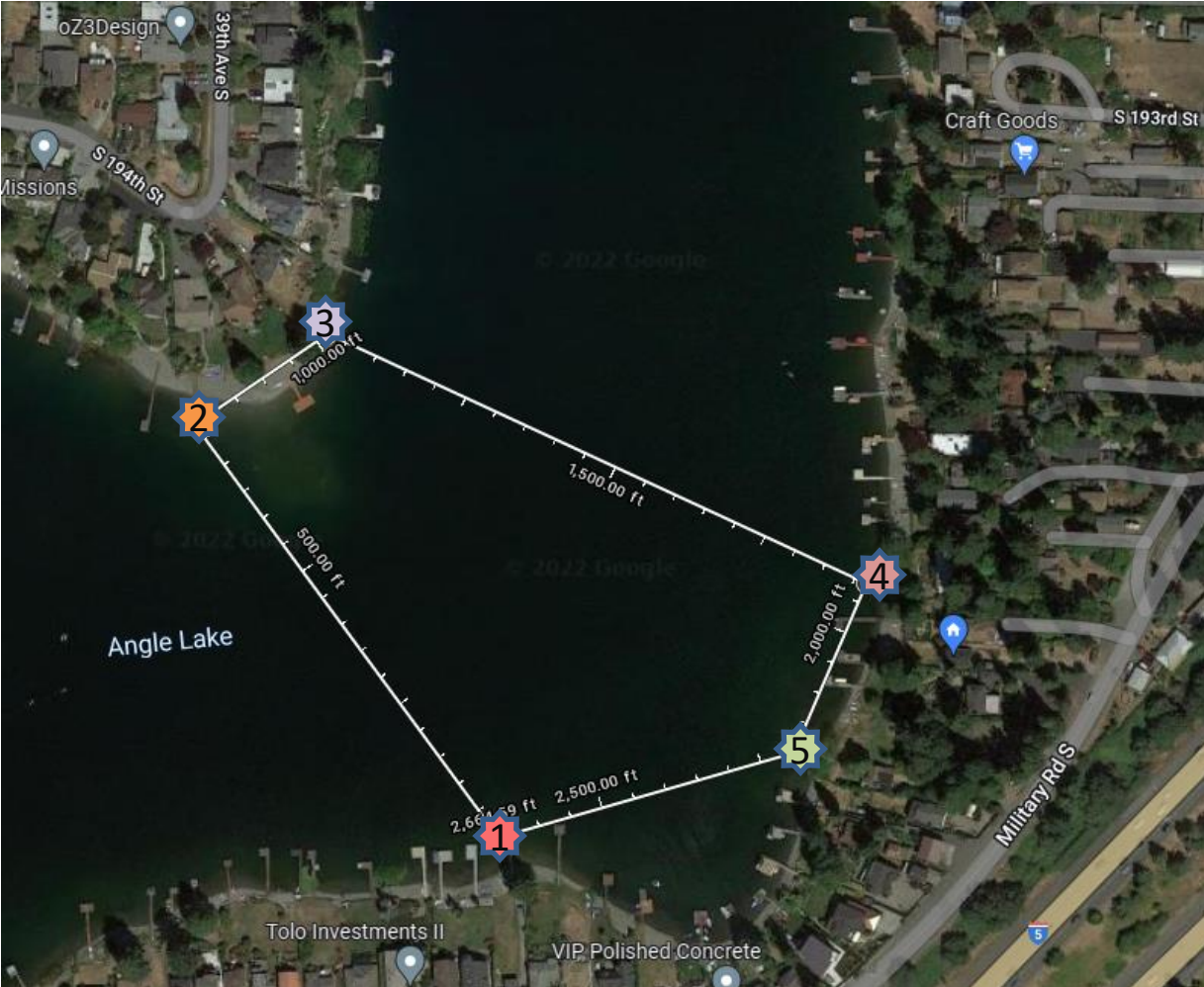


# Paddleboard Poker at Angle Lake



## Rules of the Game:

- ✓ All paddleboard participants (aka: player) will start and end at the **Dinosaur** located on Pettitt Beach.
- ✓ Each player is required to visit all five stops to complete the game.
- ✓ A single playing card will be randomly drawn and presented to the player at each stop.
- ✓ The player must bring all cards collected back to the finish line at Pettitt Beach.
- ✓ The first three players to return to the finish line at Pettitt Beach will be awarded an extra playing card.
- ✓ The player with the best 5 card poker hand will be awarded the winning trophy!

## Selected Stops

### START

- 1** Dick & Karlene Petitt
- 2** Marlys Patton / Tim Carroll
- 3** Jodi Wicks
- 4** Joe & Lisa Nguyen
- 5** Rosalyn Rombauer

### FINISH

- 1** Dick & Karlene Petitt

**Release from Liability:** Recognizing that the ALSC, a non-profit neighborhood based organization run solely on a voluntary basis, will do everything within our capability to best ensure a safe experience, it is important to understand that participation by any member(s) or non-member(s) in any activities sponsored by the ALSC is to do so at the participants own risk.